



## Standard Call Point, Magnetic Reset c/w Remote Socket

### Part No. **NC802DM**

- An attractively designed button-operated call point capable of generating Standard calls on an 800 Series Call System.
- Includes a magnetic reset 'target' that requires a separately-available NC803M magnetic reset key to operate.
- Red reassurance LED confirms a call has been made.
- Includes a 6.35mm jack plug socket for the connection of an optional tail call lead, pressure mat or other ancillary calling device.
- Onboard magnetic reset 'target' cancels calls made from the NC802DM **and** standard calls made from other devices wired on the same zone (such as ceiling pull units in Ensuite areas).
- Mounts on a standard UK 25mm single gang flush or surface back box.



## Technical Specifications



<b>Quiescent current</b>	0mA (none).
<b>Alarm current</b>	Determined by the type of control equipment and number / type of field devices connected to the system.
<b>Indicators</b>	Red Reassurance LED (lit constant for Standard calls).
<b>Controls</b>	Call button (generates Standard calls only); Magnetic reset target (cancels Standard calls from the NC802DM and Standard calls from other devices wired on the same Zone). Reset operation requires an NC803M magnetic reset key.
<b>Connections</b>	SIG (Signal); -Ve (Negative); RC (for the optional connection of an NC807C ceiling pull unit).
<b>Expansion connections</b>	Yes. For an optional NC807C ceiling pull unit.
<b>Onboard Sounder</b>	Yes. For optional tail call leads, floor pressure mats, air switches, etc.
<b>Onboard Infrared Receiver</b>	No.
<b>Product dimensions (mm)</b>	87 W x 87 H x 32 D mm. Mounts on a UK 25mm single gang back box.
<b>Construction &amp; finish</b>	Plastic.
<b>IP Rating</b>	IP41.
<b>Weight</b>	64g.
<b>Operating conditions/temperature</b>	-5°C to +40°C. Max. relative humidity 95% non-condensing.

## Dimensions & Mounting Information



<b>Product dimensions:</b>	87 W x 87 H x 24 D mm. Mounts on a 25mm UK single gang back box.
----------------------------	--

## BIM/CAD Drawings



BIM Drawing (REVIT)

[Download](#)

CAD Drawing (DWG)

[Download](#)

Documentation ^

## NC802DB/DM Instructions

DNU8024100 Rev 1

[Download \(39.01k\)](#)

9 other products in the same category: ^



**Standard Call Point, Button Reset c/w Remote...**



**Standard Call Push with Protruding Button, No...**



**Emergency Call Point, Button Reset c/w Remote...**



**Emergency Infrared Call Point, Button Reset c/w...**



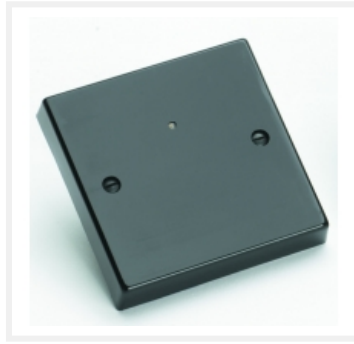
**Emergency Infrared Call Point, Magnetic Reset...**



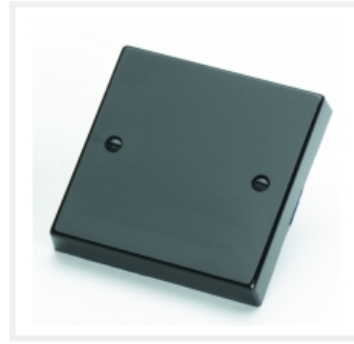
**Emergency Only Call Point, Button Reset**



**Water Resistant Alert Point,  
IP65, Magnetic Reset**



**Master Infrared Ceiling  
Receiver**



**Slave Infrared Ceiling  
Receiver**

---

## CONTACT US

 C-TEC , Challenge Way, Wigan, WN5 0LD, UK Opening times: 08:30 - 17:00 GMT.

 **+44 (0) 1942 322744**

 [sales@c-tec.co.uk](mailto:sales@c-tec.co.uk)

---