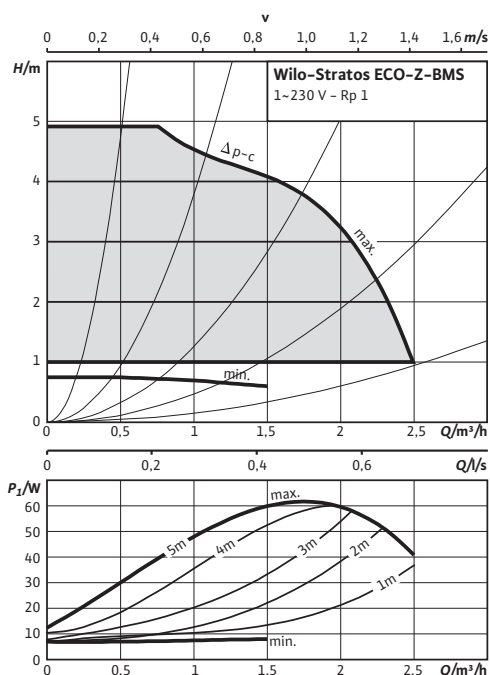
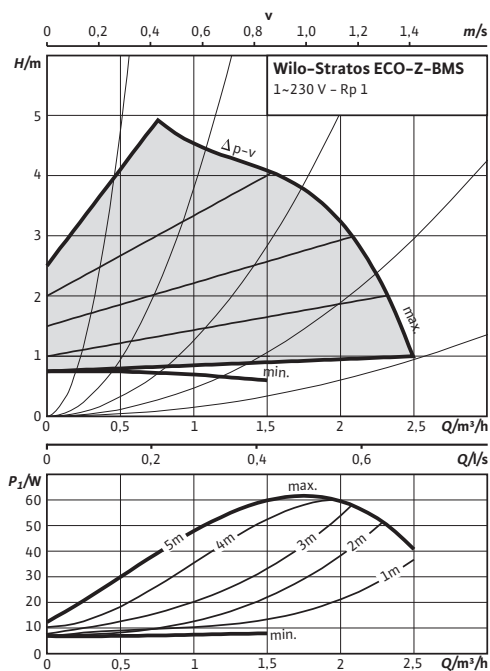


Data sheet: Wilo-Stratos ECO-Z 25/1-5-BMS

Pump curves $\Delta p-c$ (constant)



Pump curves $\Delta p-v$ (variable)



Approved fluids (other fluids on request)

Drinking water and water for food-processing companies in accordance with TrinkwV 2001 (drinking water ordinance)

Permitted field of application

Temperature range for applications in domestic hot water circulation systems at maximum ambient temperature of +40 °C

+15 °C...+65 °C

Temperature range for applications in domestic hot water circulation systems at max. ambient temperature of +40 °C in short-term operation 2 h

T 70 °C

Max. permitted total hardness in domestic hot water circulation systems

3.57 mmol/l (20 °dH)

Maximum permissible operating pressure

P_{max} 10 bar

Pipe connections

Threaded pipe union	Rp 1
Thread	G 1½
Overall length	L0 180 mm

Motor/electronics

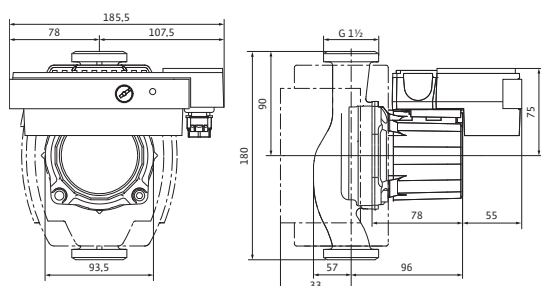
Electromagnetic compatibility	EN 61800-3
Emitted interference	EN 61000-6-3
Interference resistance	EN 61000-6-2
Speed control	Frequency converter
Protection class	IP 44
Insulation class	F
Mains connection	1~230 V, 50 Hz
Speed	n 1400 - 3500 rpm
Nominal motor power	P_2 34 W
Power consumption	P_1 5.8 - 59 W
Current consumption	I max. 0.46 A
Motor protection	Not required (blocking-current proof)
Threaded cable connection	PG 1x7/1x9/1x11

Materials

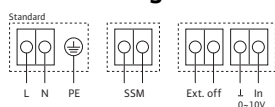
Pump housing	Red brass (CC 499K) according to DIN 50930-6 in accordance with Drinking Water Ordinance
--------------	--

Data sheet: Wilo-Stratos ECO-Z 25/1-5-BMS

Dimension drawing



Terminal diagram



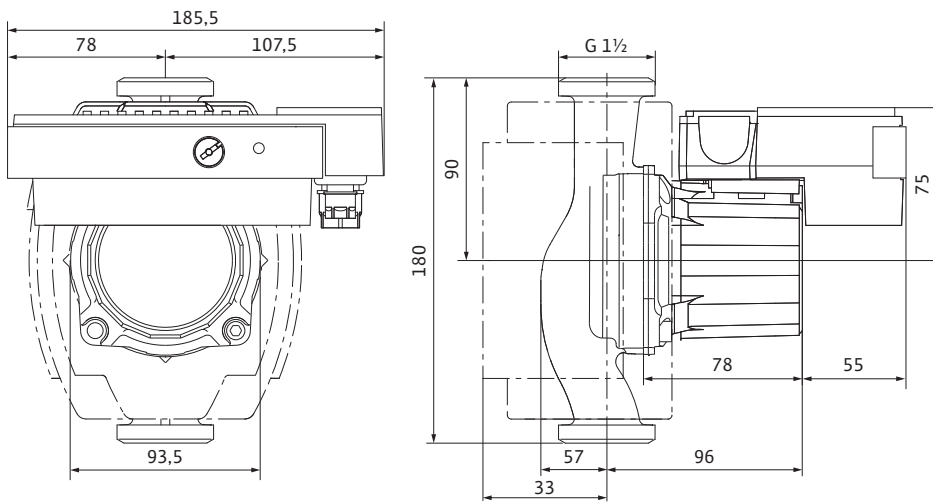
1~230 V, 50 Hz

Single-phase motor, 2-pole, 1~230 V, 50 Hz

Impeller	Polyphenylene oxide
Pump shaft	Stainless steel
Bearing	Carbon, synthetic resin impregnated
Minimum suction head at suction port for avoiding cavitation at water pumping temperature	
Minimum suction head at 50 / 95 °C	0.5 / 3 m
Information for order placements	
Make	Wilo
Type	Stratos ECO-Z 25/1-5-BMS
Art no.	4092515
Weight approx.	<i>m</i> 3 kg

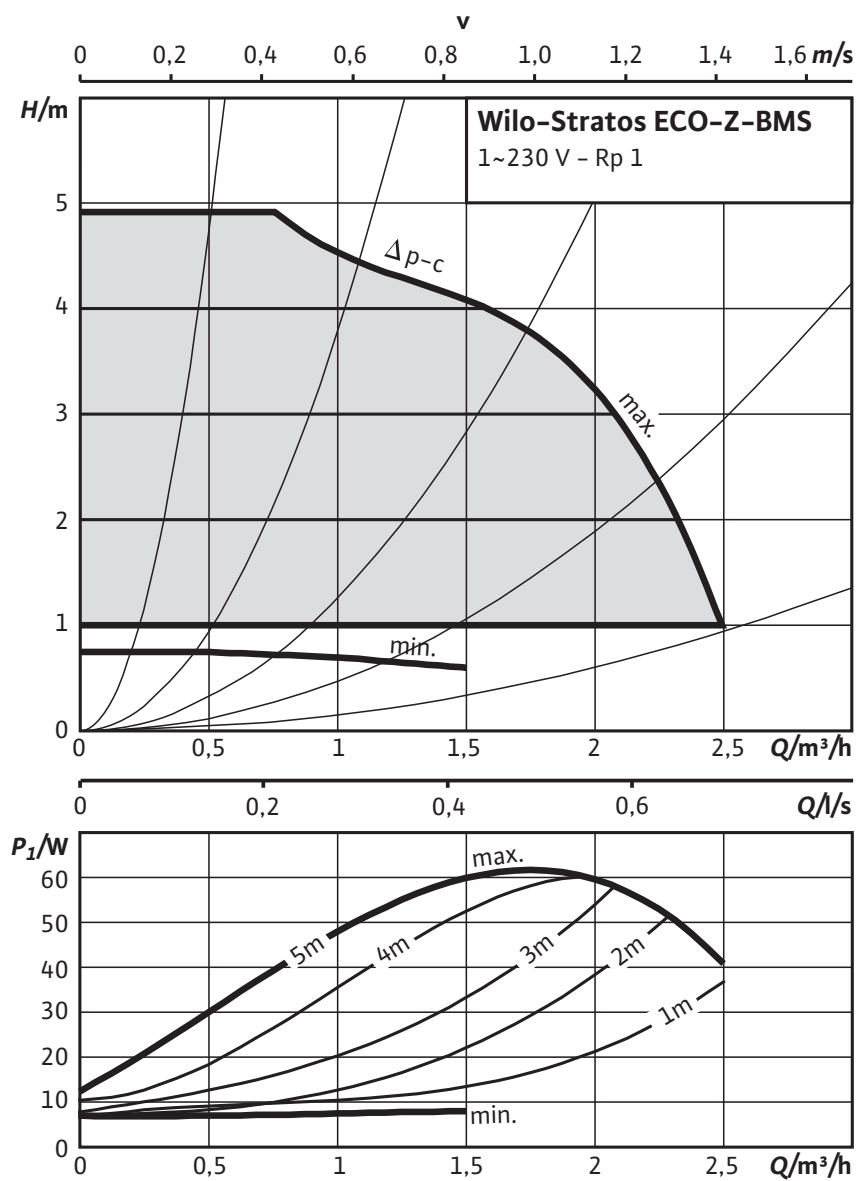
Dimensions and dimension drawings: Wilo-Stratos ECO-Z 25/1-5-BMS

Dimension drawing



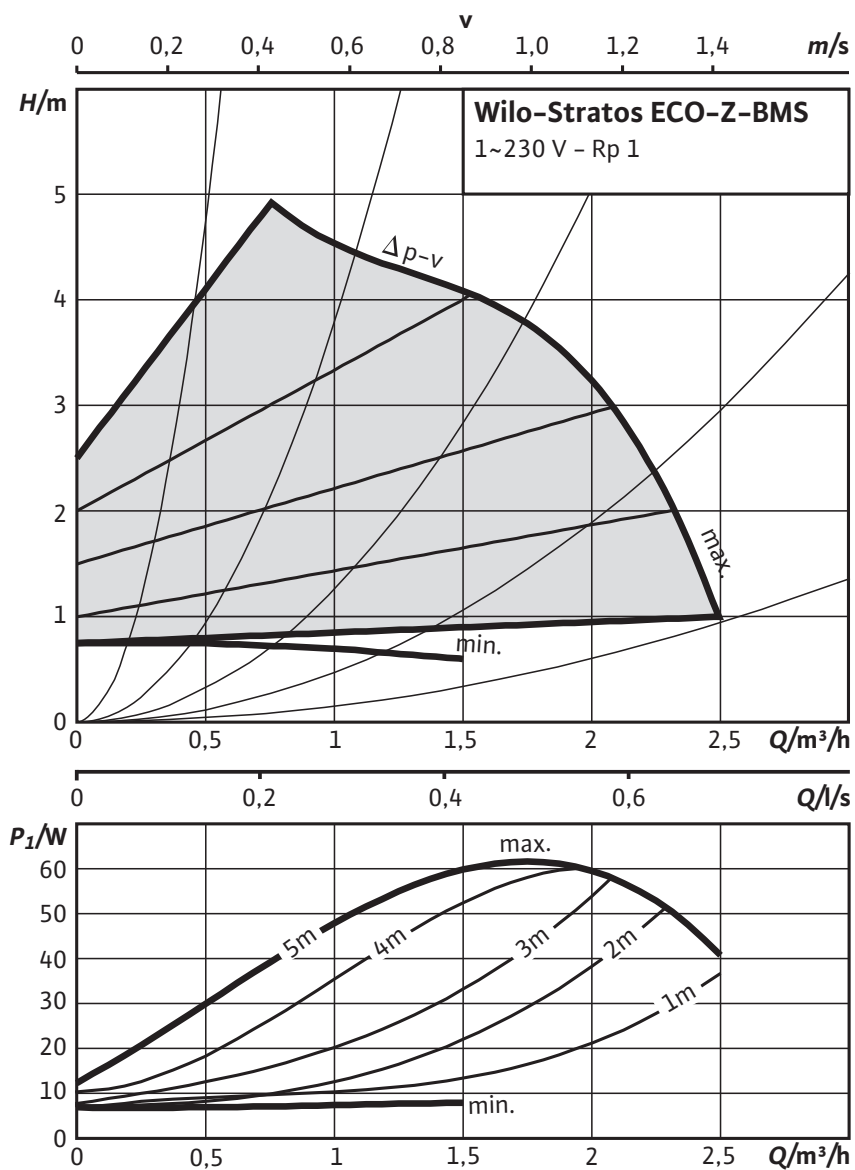
Pump curves: Wilo-Stratos ECO-Z 25/1-5-BMS

Pump curves $\Delta p-c$ (constant)



Pump curves: Wilo-Stratos ECO-Z 25/1-5-BMS

Pump curves $\Delta p-v$ (variable)



Ordering information: Wilo-Stratos ECO-Z 25/1-5-BMS

Information for order placements

Make	Wilo	
Type	Stratos ECO-Z 25/1-5-BMS	
Art no.	4092515	
EAN number	4016322891475	
Colour	Green	
Minimum order quantity	1	
Minimum order quantity unit	PCE	
Weight (net)	<i>kg</i>	3.2
Length (net)	<i>mm</i>	186
Width (net)	<i>mm</i>	180
Height (net)	<i>mm</i>	185
Weight (gross)	<i>kg</i>	3.3
Length (gross)	<i>mm</i>	220
Width (gross)	<i>mm</i>	212
Height (gross)	<i>mm</i>	212
Packaging type	Cardboard box	
Packaging property	Sales packaging	
Pieces per pallet	60	
Number per layer	15	

Specification texts: Wilo-Stratos ECO-Z 25/1-5-BMS

This circulation pump is suitable only for drinking water.

Domestic hot water circulation pump (glandless version) with minimum operating costs, for pipe installation.

Used in domestic hot water circulation systems; fluids are drinking water and water for food companies in accordance with TrinkwV 2001 (Drinking Water Ordinance). Max. fluid temperature of +65 °C

With built-in electronic power control, differential-pressure controlled.

- Equipped as standard with thermal insulation shell
- Automatic setback operation
- Either setpoint or speed adjustment with "red button"
- Either variable or constant differential pressure control
- Collective fault signal as potential-free contact
- External OFF control input
- 0-10V control input

Blocking-current proof synchronous motor in accordance with ECM technology with maximum efficiency and high starting torque, including automatic deblocking function. Pump housing made of red brass, impeller made of Noryl, stainless steel shaft with resin-impregnated carbon friction bearings.

Can be used for all drinking water applications (+15 to +65°C) up to 20 German degrees of hardness.

Materials

Pump housing: Red brass (CC 499K) according to DIN 50930-6 in accordance with Drinking Water Ordinance

Impeller: Polyphenylene oxide

Pump shaft: Stainless steel

Bearing: Carbon, synthetic resin impregnated

Approved fluids (other fluids on request)

Max. volume flow: 2.5 m³/h

Max. delivery head: 5.0 m

Pipe connections

Threaded pipe union: Rp 1

Thread: G 1½

Nominal flange diameter: DN 25

Overall length: 180 mm

Motor/electronics

Electromagnetic compatibility: EN 61800-3

Emitted interference: EN 61000-6-3

Interference resistance: EN 61000-6-2

Protection class: IP 44

Insulation class: F

Mains connection: 1~230 V, 50 Hz

Max. speed: 3500 rpm

Speed: 1400 - 3500 rpm

Nominal motor power: 34.0 W

Power consumption 1~230 V: 5.8 - 59 W

Current at 1~230V: 0.46 A

Specification texts: Wilo-Stratos ECO-Z 25/1-5-BMS

Motor protection: Not required (blocking-current proof)

Threaded cable connection: 1x7/1x9/1x11

Information for order placements

Art no.: 4092515

EAN number: 4016322891475

Weight approx.: 3.1 kg

Make: Wilo

Designation: Wilo-Stratos ECO-Z 25/1-5-BMS