

Copper Tube Terminals



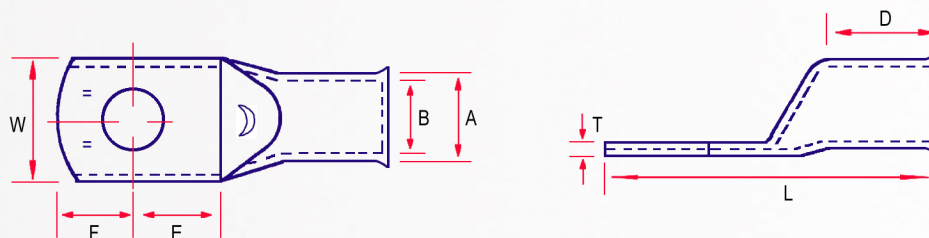
TQ Range

Application: Un-insulated heavy duty terminals suitable for power cables up to 1000 volts.

Material: Manufactured from seamless copper tube to BS EN 12449:1999

Finish: Electro Tin plated to BS 1872:1974

- All terminals are manufactured from 99.5% copper and fully annealed to ensure optimum ductility to avoid severe deformation such as cracking and splitting when crimped
- Terminals are supplied with an inspection window which enables the user to ensure full and correct insertion of the conductor and a flared entry ensures a smooth transition from terminal to conductor
- Internal barrel diameters suit standard cables as defined in BS 6360
- All SWA terminals are identified on the palm with cable size (and stud hole size) to ensure correct selection of the appropriate tool and dies



Tool Selection

Cond. Size mm ² Strand / Flex.	Part No.	Stud Hole	Dimensions mm							Supplied With Dies Crimp Profile	Mechanical Crimp Tools					
			A	B	W	E	F	D	L		T	Y	Y	Y		
1.5 / 1.5	1.5-4TQ	M4	3.3	1.8	8.5	6.0	6.0	6.0	18.0	0.8	RP1516	Y	Y	Y		
	1.5-5TQ	M5	3.3	1.8	9.5	6.0	6.0	6.0	20.0	0.8		Y	Y	Y		
	1.5-6TQ	M6	3.3	1.8	10.5	6.0	6.0	6.0	20.0	0.8		Y	Y	Y		
2.5 / 2.5	2.5-4TQ	M4	4.2	2.4	8.5	6.0	6.0	7.0	19.0	1.0		RP625 CT650H	Y	Y	Y	
	2.5-5TQ	M5	4.2	2.4	9.5	6.0	6.0	7.0	21.0	1.0			Y	Y	Y	
	2.5-6TQ	M6	4.2	2.4	10.5	6.0	6.0	7.0	21.0	0.8			Y	Y	Y	
4 / 4	4-4TQ	M4	5.0	3.0	8.5	6.0	5.5	9.0	25.0	1.3			RP625 CT650H	Y	Y	Y
	4-5TQ	M5	5.0	3.0	9.5	6.0	6.0	9.0	25.0	1.1				Y	Y	Y
	4-6TQ	M6	5.0	3.0	10.5	6.0	6.0	9.0	25.0	1.0				Y	Y	Y
6 / 6	6-4TQ	M4	6.0	4.0	8.0	6.0	6.0	9.0	28.0	1.6				RP625 CT650H	Y	Y
	6-5TQ	M5	6.0	4.0	9.0	6.0	6.0	9.0	28.0	1.6	Y				Y	Y
	6-6TQ	M6	6.0	4.0	11.0	6.0	6.0	9.0	28.0	1.4	Y				Y	Y
	6-8TQ	M8	6.0	4.0	13.0	9.5	9.5	10.0	35.0	1.1	Y				Y	Y
	6-10TQ	M10	6.0	4.0	14.5	9.5	9.5	10.0	35.0	1.0	Y	Y			Y	

Blank Palm and Angle Terminals available on request.

Copper Tube Terminals