

# Nylon Cable Tie Accessories

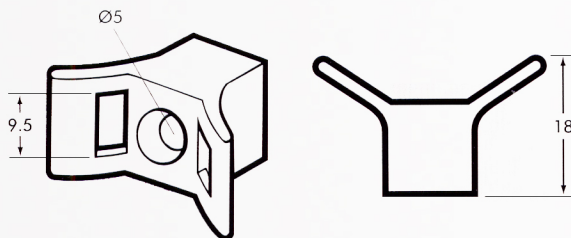
## Cable Tie Supports

Part No.	Max Cable Tie Width (mm)	Ø Screw Hole (mm)	Maximum Support Width (mm)	Support Height (mm)
<b>CTS9B</b>	9.5	5	14	18

Black only.

Screwed support. For cable ties up to 9mm width. Fixing is suitable for either a countersunk or flat head screw. For wall plug max 8mm

Pack Quantity: 100



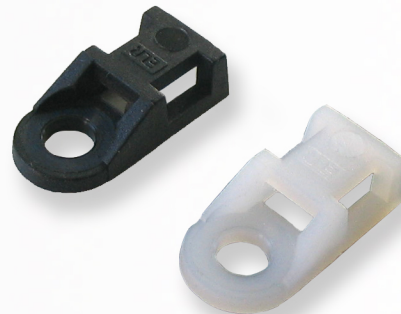
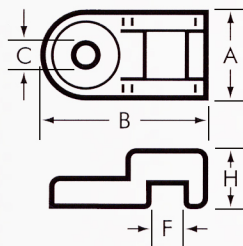
## Cable Tie Eyelets

Part No.		Max Cable Tie Width (mm)	Dimensions mm				
Natural	Black		A	B	C	F	H
<b>EL48N</b>	<b>EL48B</b>	4.8	10	20	4.3	5	6

**Material:** Nylon 6/6.

Mounted with standard screws or rivets. Particularly useful when space is limited.

Pack Quantity: 100



## Cable Tie Cradles

Part No.		Max Cable Tie Width (mm)	Dimensions mm				
Natural	Black		A	B	C	F	H
<b>CRAD48N</b>	<b>CRAD48B</b>	5.0	9.5	15	3.5	5	7
<b>CRAD78N</b>	<b>CRAD78B</b>	9.0	15	25	5	9	11

**Material:** Nylon 6/6.

They provide extra support for large bundles and many components. They are especially useful in small areas.

Pack Quantity: 100

