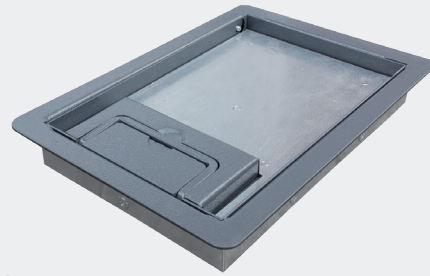


# Powder Coated Steel Frame & Lids - Alternative Lid Options

## Specifications

### Powder Coated Frame & Lids

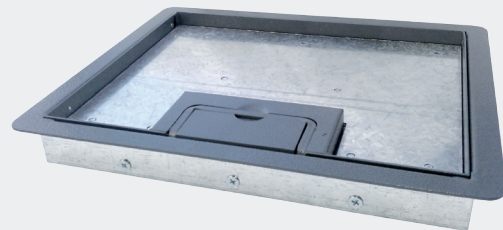
- Made from Powder Coated Steel (Colour=RAL7031)
- Galvanised steel insert for added strength
- Lifting handle and cable flap
- 12mm or 20mm recess Lid ideal for ceramic tiles laminate flooring or other bespoke flooring material
- Designed specifically for high traffic environments such as schools and colleges.



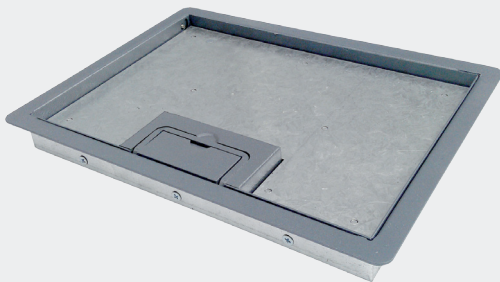
PCL12R346



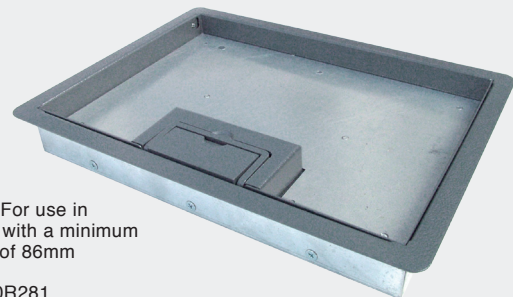
PCL12R311



PCL12R296

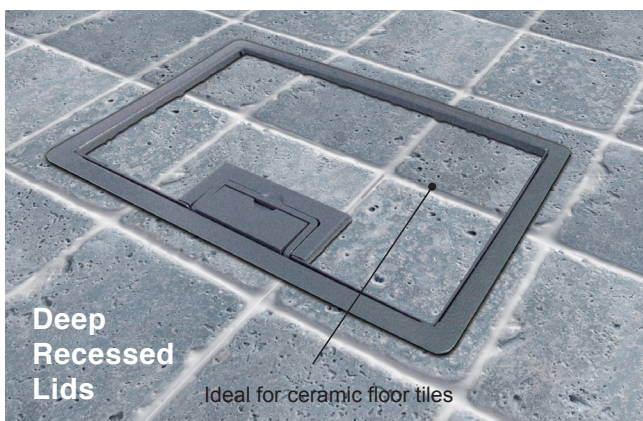


PCL12R281



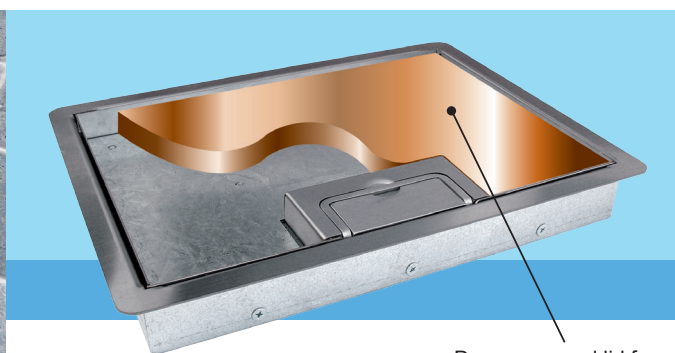
**Note:** For use in boxes with a minimum depth of 86mm

PCL20R281



**Deep Recessed Lids**

Ideal for ceramic floor tiles



Deep recessed lid for all types of floor covering

| Model     | Description             | Colour | Lid Recess | Frame & Lid | Availability For          |
|-----------|-------------------------|--------|------------|-------------|---------------------------|
| PCL12R346 | Powder Coated Steel Lid | Grey   | 12mm       | 235 x 168mm | 1 Compt Box               |
| PCL12R311 | Powder Coated Steel Lid | Grey   | 12mm       | 205 x 230mm | 2 Compt Compact Box       |
| PCL12R296 | Powder Coated Steel Lid | Grey   | 12mm       | 280 x 230mm | 2 & 3 Compt Compact Boxes |
| PCL12R281 | Powder Coated Steel Lid | Grey   | 12mm       | 313 x 230mm | 3 & 4 Compt Large Boxes   |
| PCL20R281 | Powder Coated Steel Lid | Grey   | 20mm       | 313 x 230mm | 3 & 4 Compt Large Boxes   |

**Note:** Due to our policy of continuous improvement, Tass Cable Management Ltd reserve the right to change product specifications without notice.