

Floor Standing Enclosures accessories

CON, Cable conduit



Description: For flexible and safe protection of cables installed between the door or swing frame and the enclosure's interior. Highly flexible and halogen free.

Material: Polyethylene

Mounting requirement: Add CONH for direct mounting to profiles.

Pack quantity: 25m.

Diameter	Part No.
16	CON16
29	CON29
36	CON36
48	CON48

CONH, Universal conduit holder



Description: Universal holder for cable conduit CON. Can be mounted horizontally or vertically on any 25 mm hole pattern of the door frame, enclosure frame or accessory profile.

Material: Polycarbonate.

Pack quantity: 10 pieces.

Diameter	Part No.
16	CONH16
29	CONH29
36	CONH36
48	CONH48

CONU, Cable conduit UL approved



Description: For flexible and safe protection of cables installed between the door or swing frame and the enclosure's interior. Highly flexible and halogen free.

Material: Polyamide. UL approved.

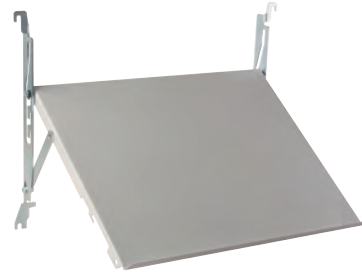
Mounting requirement: Add CONH for direct mounting to profiles.

Pack quantity: 25m.

Diameter	Part No.
16	CONU16
29	CONU29
36	CONU36
48	CONU48

CONU available only on request.

DDK, Drawing desk



Description: Mounted directly to the door frame it provides a solid surface for documents, computer or measuring devices. The desk can be easily folded and locked within the door frame space. An automatic safety positioning system locks the desk at angles of 55°, 70° and 90°. The DDK800 can also be mounted on a 1000mm wide door, by the use of the DCP1002 accessory.

Material: 1.35mm mild steel.

Finish: RAL 7035 structured powder coating.

Pack quantity: 1 piece with mounting accessories.

W	Part No.
600	DDK600R5
800	DDK800R5

DRA, Document pocket



Description: Self adhesive, for DIN A4.

Usable depth: 30mm.

Material: Thermoplastic.

Finish: RAL 7035.

Pack quantity: 1 document pocket with double sided tape.

Part No.
DRA04

DRB, Document pocket



Description: A large steel document pocket fixed directly onto the door frame. Usable depth: 68mm.

Material: 1.35mm mild steel.

Finish: RAL 7035 structured powder coating.

Pack quantity: 1 piece with mounting accessories.

Part No.
DRB0303R5