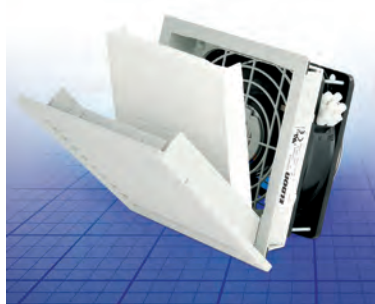




Thermal Management

EFP, Outdoor filter fan



Description: Filter fan for forced ventilation. Eldon filter fans save time on installation as they are installed with a click-in system without screws. The hinged front cover can be easily opened for quick and easy filter replacement. The airflow direction and the connection position can easily be changed. Filtration efficiency of 91%. Sleeve bearing, and ball bearing for DC filter fans and EFP250R5 and above. The new filter mat gives higher air flow and longer life with a low pressure drop because of special construction.

Material: Front cover made of injection-moulded thermoplastic, self-extinguishing, UL94V0. UV resistance.

Filter Grade G4 (according to EN 779).

Temperature resistance: -15°C to +55°C.

Type of connection: Depending on the filter fan size, type 1 cable length 310mm, type 2 terminal strip, type 3 spring-type terminal.

Protection: IP 55, NEMA12.

Finish: RAL 7035.

Approvals: CE, cUL, UL.

Pack quantity: One fan with filter.

230 V, 50/60 HZ

Connection Type	Current (A)	Noise (dB)	EF+EFA Air flow	Free air flow (m³/h)	Part No.
2	0.12	44	40	56	EFP200R5
		40	55	100	EFP220R5
3	0.12	40	109	145	EFP250R5
		42	180	233	EFP300R5
		54	380	505	EFP500R5
		63	490	770	EFP600R5
		66	570	925	EFP700R5

115 Volt AC, 60 Hz

Connection Type	Current (A)	Noise (dB)	EF+EFA Air flow	Free air flow (m³/h)	Part No.
2	0.23	44	46	64	EFP200-115R5
		40	64	110	EFP220-115R5
3	0.25	43	113	160	EFP250-115R5
		46	207	265	EFP300-115R5
		52	380	505	EFP500-115R5
		64	501	785	EFP600-115R5
		69	625	950	EFP700-115R5

24 Volt AC

Connection Type	Current (A)	Noise (dB)	EF+EFA Air flow	Free air flow	Part No.
1	0.21	44	40	56	EFP200-24VACR5

EFAP, Exhaust filter, outdoor version



Description: Exhaust filter to be used for natural ventilation, or for forced ventilation working with filter fans EFP. Eldon exhaust filters save us time because are installed with a clickin system without screws. The hinged front cover can be easily opened for quick and easy filter replacement. Filtration efficiency of 91%. The new filter mat gives longer life with a low pressure drop because of special construction.

Material: Front cover made of injection-moulded thermoplastic, self-extinguishing, UL94V0. UV resistance.

Filter Grade G4 (according to EN 779).

Temperature resistance: -15°C to +55°C.

Protection: IP 55, NEMA12.

Finish: RAL 7035.

Approvals: CE, cUL, UL.

Pack quantity: One exhaust filter.

Cut out dim.	Part No.
125 x 125 mm	EFAP200R5
177 x 177 mm	EFAP220R5
223 x 223 mm	EFAP250-300R5
291 x 291 mm	EFAP500-700R5

EFMP, Replacement filter mat



Description: To replace the standard filter supplied with the filter fans EFP and the exhaust filters EFAP. It is recommended to replace the filter each year or sooner depending on the environment.

Material: Grade G4 according to EN 779.

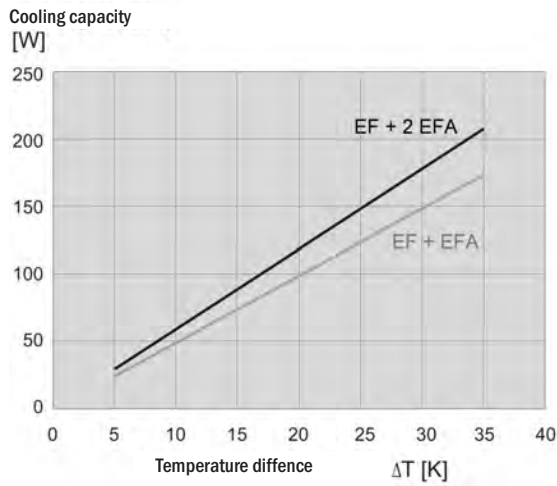
Temperature resistance: -15°C to +100°C.

Pack quantity: 5 pieces.

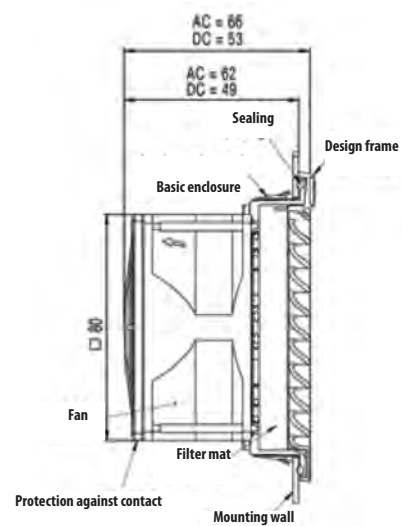
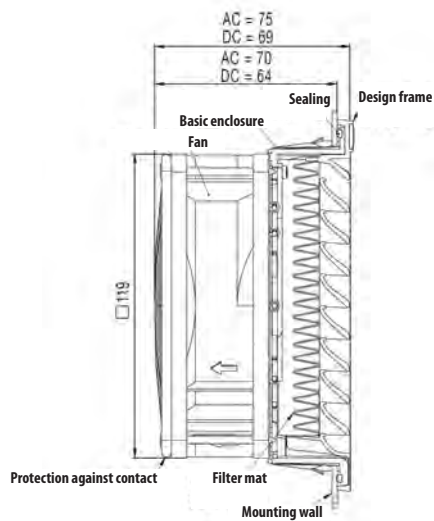
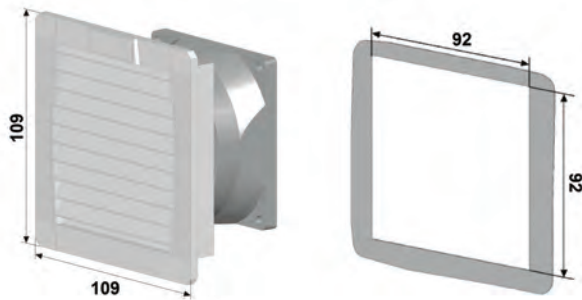
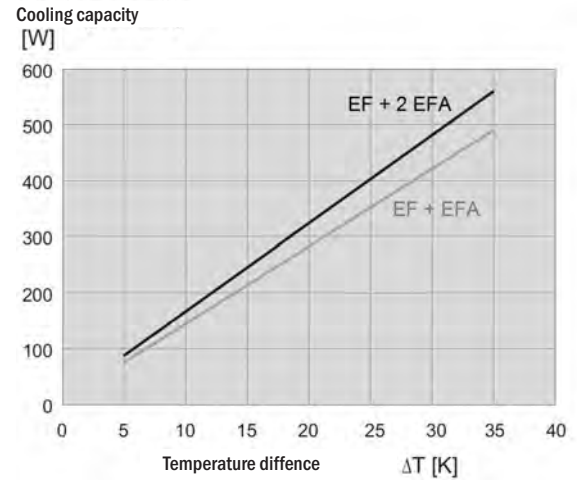
For	Part No.
EFP/EFAP 200	EFMP200
EFP/EFAP 220	EFMP220
EFP/EFAP 250/300	EFMP250-300
EFP/EFAP 500/600/700	EFMP500-700

Thermal Management

EF 100R5
EFA 100R5



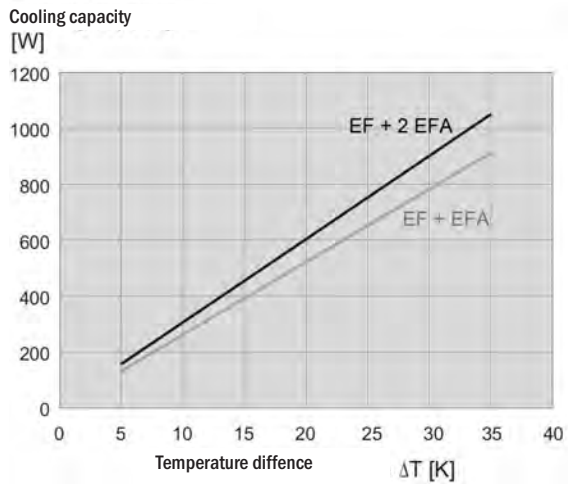
EF 200R5
EFA 200R5



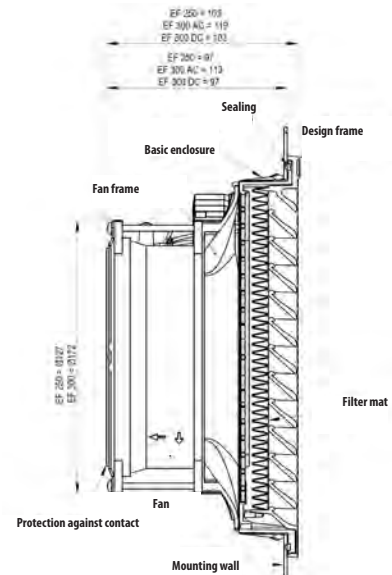
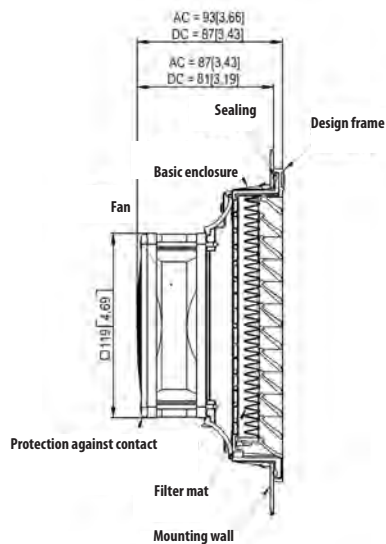
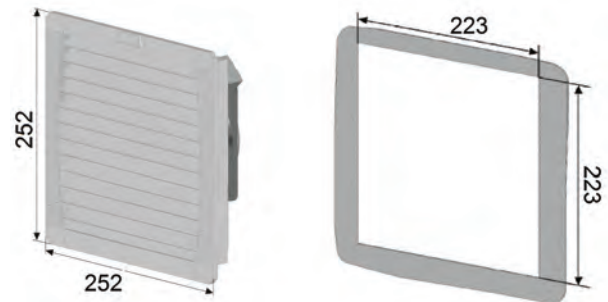
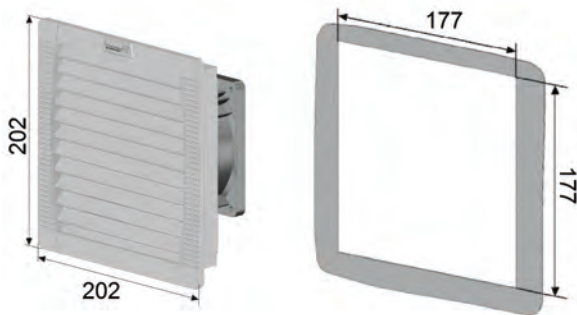
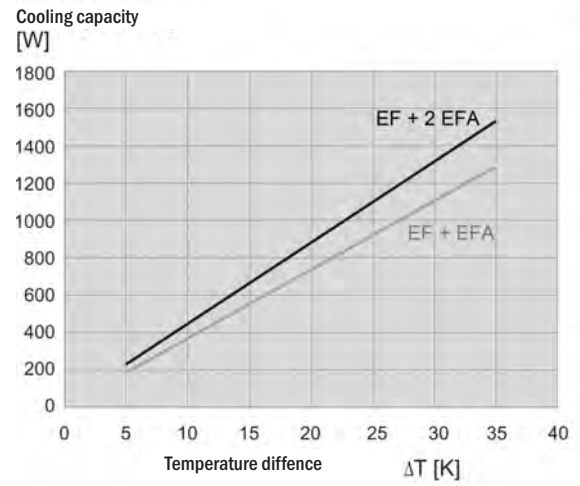


Thermal Management

EF 220R5
EFA 220R5

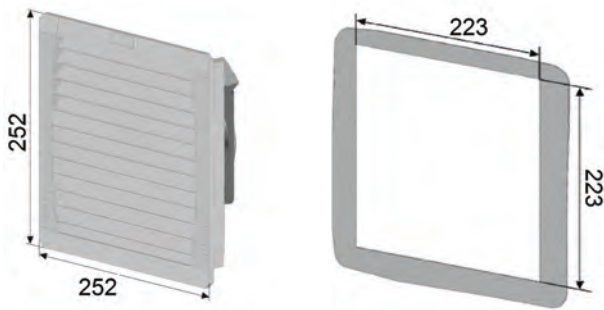
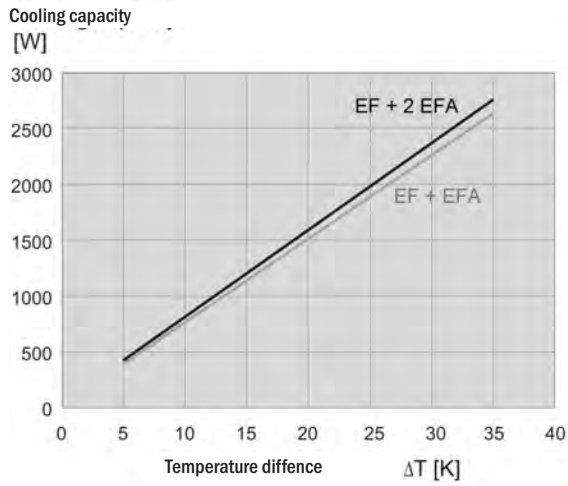


EF 250R5
EFA 250-300R5

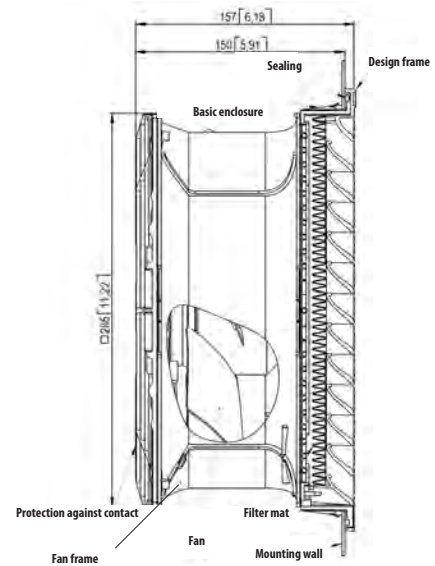
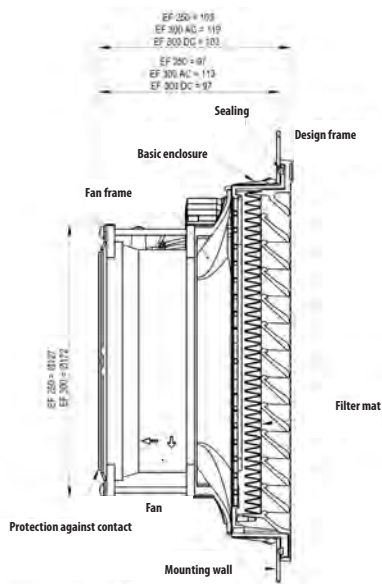
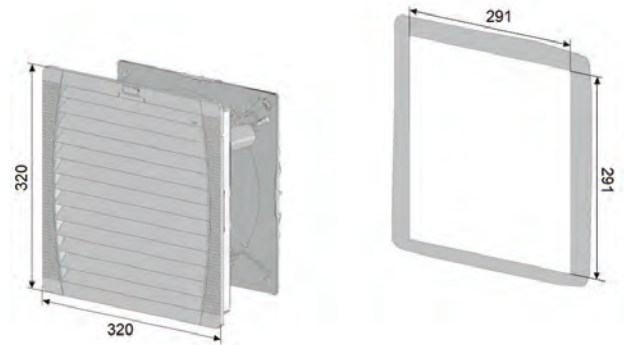
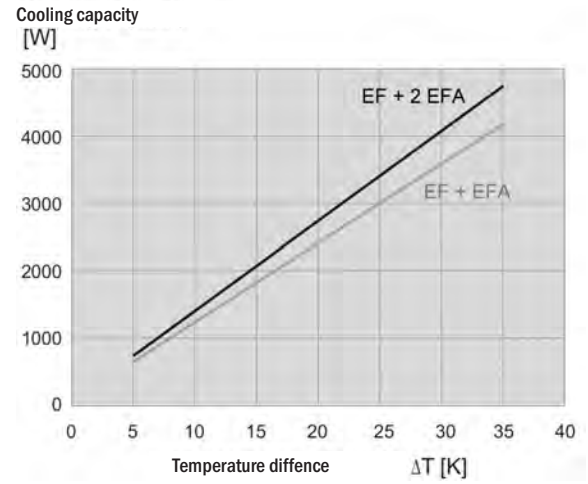


Thermal Management

EF 300R5
EFA 250-300R5



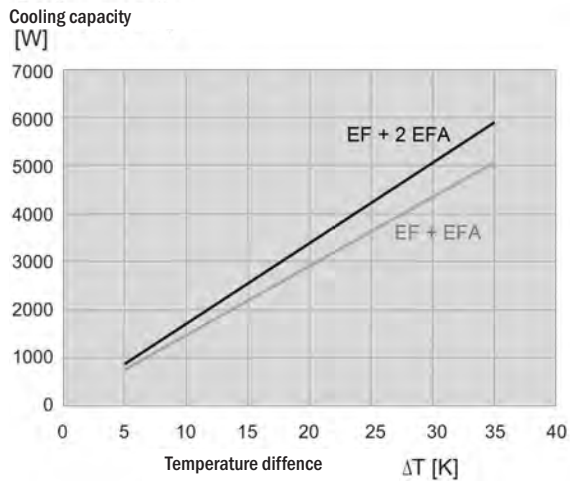
EFA 500R5
EFA 500-700R5



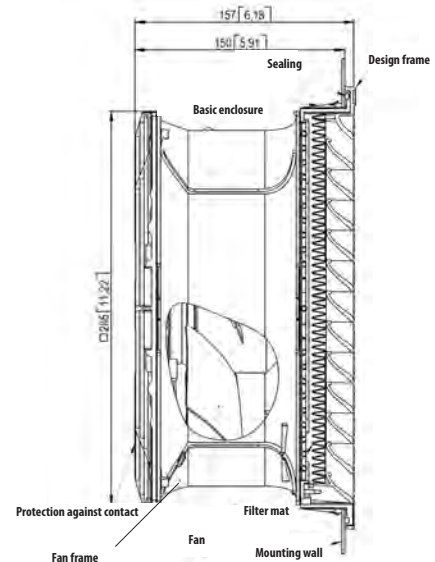
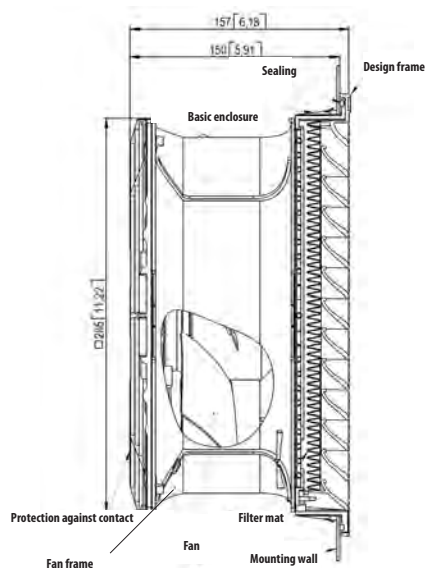
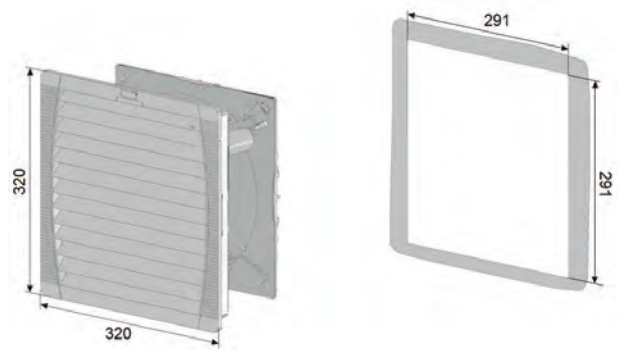
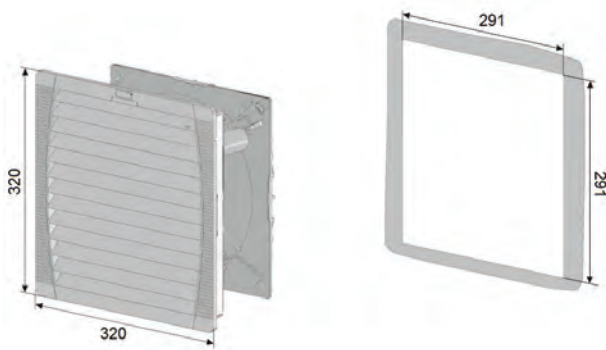
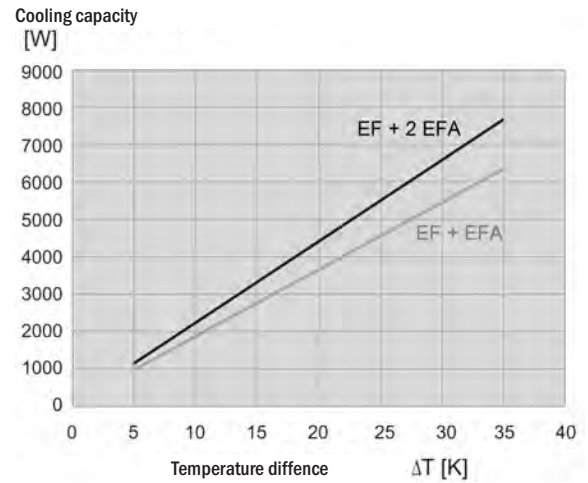


Thermal Management

EF 600R5 EFA 500-700R5

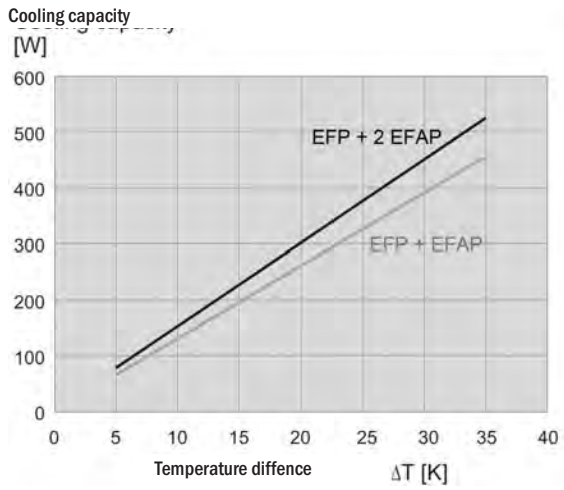


EF700R5 EFA 500-700R5

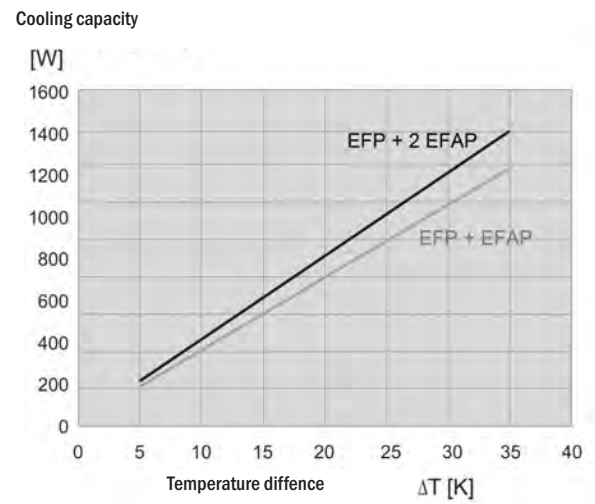


Thermal Management

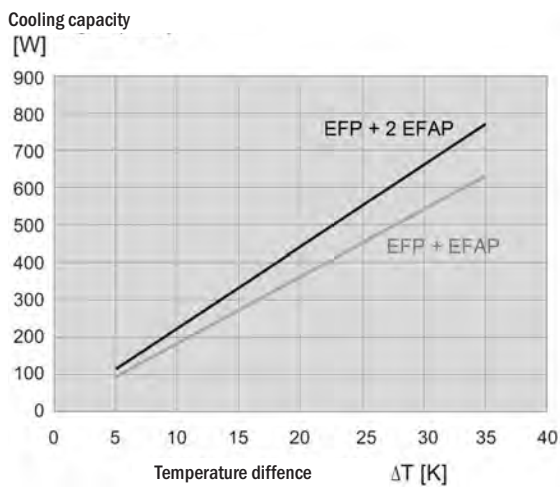
**EFP 200R5
EFAP 200R5**



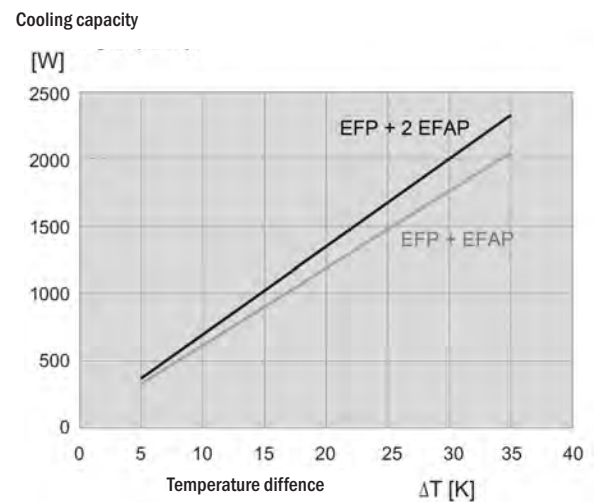
**EFP 250R5
EPAF 250-300R5**



**EFP 220R5
EFAP 220R5**



**EFP 300R5
EFAP 250-300R5**

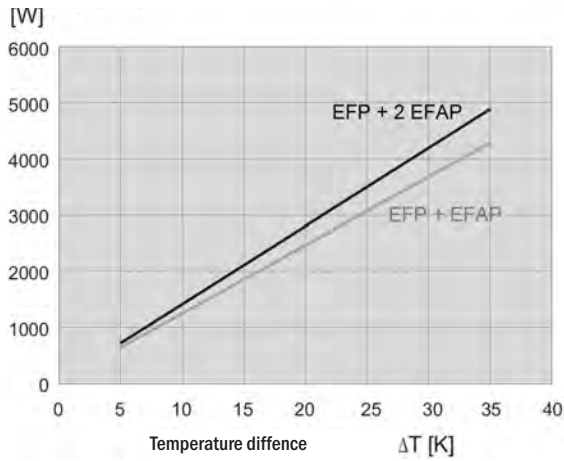




Thermal Management

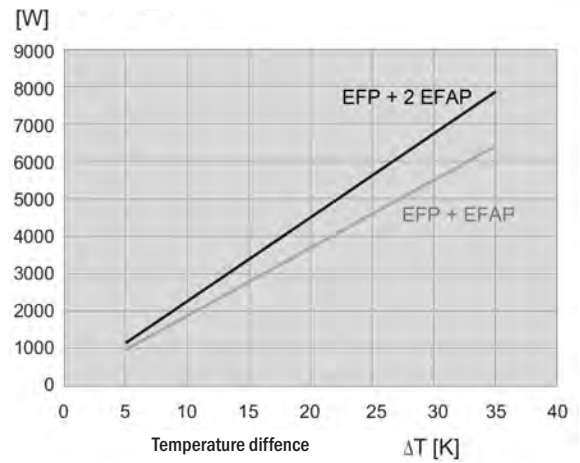
EFP 500R5
EFAP 500-700R5

Cooling capacity



EFP700R5
EFAP 500-700R5

Cooling capacity



EFP 600R5
EFAP 500-700R5

Cooling capacity

