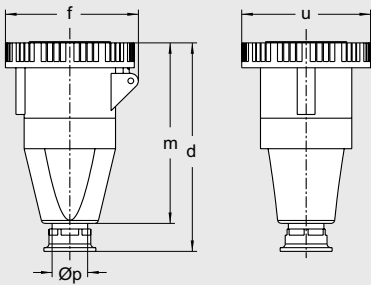


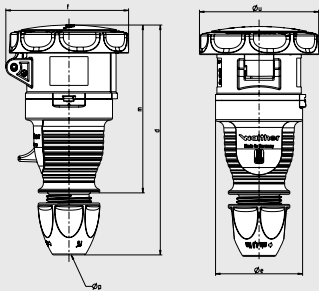
**Couplers**  
- screwless  
- with screw terminals

4



Amp.	63				125		
Poles	3	4	5	3	4	5	
d	136	255	255	255	332	332	
f	78	117	117	117	130	130	
m	121	206	206	206	275	275	
u	72	110	110	110	130	130	
Øp	7,5 - 14,5	18 - 34,5	18 - 34,5	18 - 34,5	24 - 45	24 - 45	

**Couplers, screw terminal connection,**  
with trumpet gland,  
125 A couplers with Multi-Contact  
IP 67

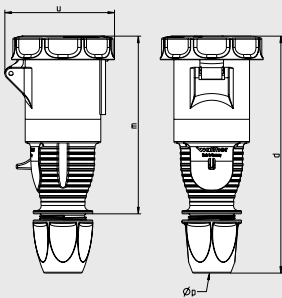


Amp.	16	16	32	32
Poles	4	5	3 / 4	5
d	150-161	150-161	174-183	174-183
Ø e	Ø 65	Ø 65	Ø 72	Ø 72
f	85	92	95	104
m	125	125	142	142
Ø u	Ø 81	Ø 89	Ø 95	Ø 100
Ø p	7,5 - 18,5	7,5 - 18,5	10 - 22,5	10 - 22,5

**Couplers, screw terminal connection,**  
with exterior cable gland,  
IP 67

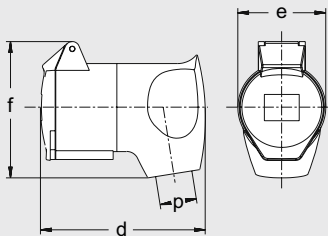
or

**Couplers, screwless („SL“),**  
with insulation displacement connection,  
with exterior cable gland,  
IP 67



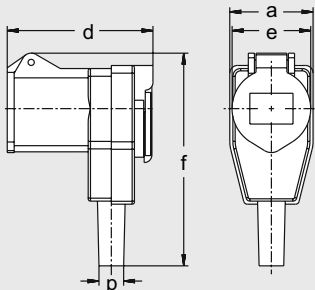
Amp.	63		
Poles	3	4	5
d	261	261	261
u	116	116	116
m	189	189	189
Øp	14-33	14-33	14-33

**Couplers, screw terminal connection,**  
with exterior cable gland,  
IP 67



Amp.	16
Poles	3
d	95
e	50,3
f	80
p	8/13

**Angled couplers,**  
screw terminal connection,  
IP 44



Amp.	16
Poles	3
a	54
d	87
e	49,5
f	140
Øp	7/13

**Angled coupler,**  
screw terminal connection,  
with Schuko socket on reverse side,  
IP 44



A holding plate allows you to suspend a plug/coupler with exterior cable gland from the ceiling.

314 500 = holding plate for 16 A plug/coupler

334 500 = holding plate for 32 A plug/coupler



314 500

Ampère	Poles	110 V 50 a. 60 Hz			230 V 50 a. 60 Hz			400 V 50 a. 60 Hz			500 V 50 a. 60 Hz			> 50 - 500 V 100 - 300 Hz			> 50 - 500 V over 300 - 500 Hz			
		3pole 4h	4pole 4h	5pole 4h	3pole 6h	4pole 9h	5pole 9h	3pole 9h	4pole 6h	5pole 6h	3pole 7h	4pole 7h	5pole 7h	3pole 10h	4pole 10h	5pole 10h	3pole 2h	4pole 2h	5pole 2h	



### Part numbers

16	3	319 304	<b>319 306</b>	319 309					10
16	5			<b>319 Ni</b>					10
32	5			<b>339 Ni</b>					10
63	3	369 304	<b>369 306</b>	369 309					5
63	4	369 404	369 409	<b>369 406</b>	369 407	369 410	369 402		5
63	5	369 504	369 509	<b>369 Ni</b>					5
125	3	379 304	<b>379 306</b>	379 309					2
125	4	379 404	379 409	<b>379 406</b>	379 407	379 410	379 402		2
125	5	379 504	379 509	<b>379 Ni</b>					2
125	5			<b>379 Ni</b>					2
16	4	319 404	319 409	<b>319 406</b>	319 407	319 410	319 402		10
16	5	319 504	319 509	<b>319</b>					10
32	3	339 304	<b>339 306</b>	339 309					10
32	4	339 404	339 409	<b>339 406</b>	339 407	339 410	339 402		10
32	5	339 504	339 509	<b>339</b>					10



Couplers with new design and cable gland. Additionally available as **screwless version** with insulation displacement connection. To order a coupler as screwless version, just add **"SL"** behind the part number.

63	3	368 304	<b>368 306</b>	368 309					10
63	4	368 404	368 409	<b>368 406</b>	368 407	368 410	368 402		10
63	5	368 504	368 509	<b>368</b>					10



16	3	316 304	<b>316 306</b>	316 309					10
----	---	---------	----------------	---------	--	--	--	--	----



16	3		<b>317 306</b>						10
----	---	--	----------------	--	--	--	--	--	----



**Padlock**  
for locking IP 67 plugs and couplers

16 A, 4 and 5 pole and  
32 A, 3, 4 and 5 pole

Part no. 501 1

