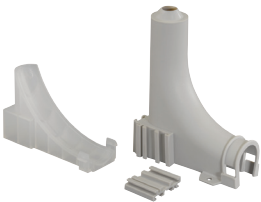


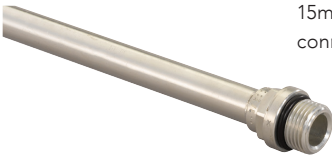
Single bend guide plastic



Used to curve and protect Uponor PEX 16mm pipe-in-pipe up out of the floor leaving only the Uponor PEX 16mm pipe exposed through the floor. Protects the pipe below floor level. Price refers to single bend guide.

Description	Code	Qty
Single bend guide, PEX 16mm pipe-in-pipe	1009008	1

Radiator connection pipe



15mm copper x 1/2" BSP MT to connect radiator to termination box.

Description	Code	Qty
1/2" MT x 250mm	1002033	1
1/2" MT x 350mm Chrome plated	1015425	20 NEW
1/2" MT x 1100mm Chrome plated	1015428	20 NEW

Snap ring



Clip-on snap ring made of Polypropylene, available in white only.

Description	Code	Qty
15/16mm	1011370	50

Radiator connection guide (solid floor)



Robust bend support and white powder coated aluminium upstand to protect pipe between floor and radiator. Price refers to a pack of two guides.

Description	Code	Qty
12/16mm	1002237	1

Pipe clips



Pipe clips made of white plastic.

Description	Code	Qty
12mm	1013141	100
15/16mm	1013142	100
20mm	1013144	50
22/25mm	1013145	50
28/32mm	1013146	50
40mm	1013147	25

Radiator connection guide (joisted floor)



Robust white powder coated aluminium upstand to protect pipe between floor and radiator. Price refers to a pack of two guides.

Description	Code	Qty
12/16mm	1002238	1

Termination Box NEW



To be used with 16x 1/2" FT 90° elbow (item 1042334) and radiator connection pipe.

Description	Code	Qty
16x 1/2" FT	1048622	10

Chromed Upstand Pipe Pack (750mm)



Chrome upstand to protect pipe between floor and radiator. For use with both pipe-in-pipe and pipe without conduit. Pack of two upstands.

Description	Code	Qty
12/16mm	1002239	1