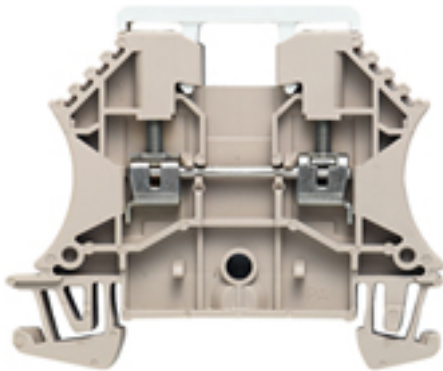


W-Series
WDU 2.5/TC TYP K**Weidmüller Interface GmbH & Co. KG**
Klingenbergstraße 16
D-32758 Detmold
Germany
Fon: +49 5231 14-0
Fax: +49 5231 14-292083
www.weidmueller.com

The versatile and extensive range of products - from 0.05 mm² to 300 mm² - means that you have diverse options for your applications at your disposal.
Hardened steel for mechanical strength and high-quality tinned copper for optimum conductivity. All materials comply with RoHS requirements and have been tested to current environment guidelines.

General ordering data

Type	WDU 2.5/TC TYP K
Order No.	1024100000
Version	W-Series, Feed-through terminal, Thermocouple, Rated cross-section: 2.5 mm ² , Screw connection, Direct mounting
GTIN (EAN)	4008190140472
Qty.	50 pc(s).

W-Series
WDU 2.5/TC TYP K

Weidmüller Interface GmbH & Co. KG
 Klingenbergstraße 16
 D-32758 Detmold
 Germany
 Fon: +49 5231 14-0
 Fax: +49 5231 14-292083
 www.weidmueller.com

Technical data
Dimensions and weights

Length	60 mm	Width	10.2 mm
Height	50 mm	Height of lowest version	50.5 mm
Weight	16.88 g	Net weight	15.54 g

Temperatures

Operating temperature		Storage temperature	
Continuous operating temp., min.	-50 °C	Continuous operating temp., max.	120 °C

Rated data IECEx/ATEX

Certificate No. (ATEX)	SIRA02ATEX3153U	ATEX certificate	
ATEX certificate	SIRA02ATEX3153U_e.pdf	Certificate No. (IECEX)	IECEXSIR05.0039U
IEC Ex certificate	IECEXSIR05.0039U_e.pdf	Max. voltage (ATEX)	55 V
Current (ATEX)	1 A	Wire cross section max. (ATEX)	2.5 mm ²
Voltage, cross-connection		Operating temperature range	For operating temperature range see EC Design Test Certificate / IEC Ex-Certificate of Conformity
	CrossConnectionGuide.pdf		
Marking EN 60079-7	Ex e II	Marking ATEX Directive 94/9/EC	II 2 G D

Additional technical data

Explosion-tested version	No	Installation advice	Direct mounting
Number of similar terminals	1	Open sides	right
Type of mounting	Snap-on	Version	Screw connection, Thermocouple

Clampable wires (rated connection)

Type of connection	Screw connection	Stripping length	10 mm
Blade size	0.6 x 3.5 mm	Connection direction	on side
Number of connections	2	Clamping range, rated connection, min.	0.13 mm ²
Clamping range, rated connection, max.	2.5 mm ²	Clamping screw	M 2.5
Tightening torque, min.	0.4 Nm	Tightening torque, max.	0.6 Nm
Torque level with DMS electric screwdriver	1	Gauge to IEC 60947-1	A2
Wire connection cross section, solid core, max. rated connection	0.5 mm ²	Wire connection cross section, solid core max. rated connection	2.5 mm ²
Wire connection cross section, stranded, rated connection, min.	1.5 mm ²	Wire connection cross section, stranded, rated connection, max.	2.5 mm ²
Wire connection cross section, finely stranded, max.	2.5 mm ²	Wire connection cross-section, finely stranded, min.	0.5 mm ²
Wire connection cross section, finely stranded with wire-end ferrules DIN 46228/1, rated connection, min.	0.5 mm ²	Wire connection cross section, finely stranded with wire-end ferrules DIN 46228/1, rated connection, max.	2.5 mm ²
Cross-section for connected conductor, finely stranded with wire-end ferrules and plastic collars DIN 46228/4, rated connection, min.	0.5 mm ²	Wire connection cross-section, finely stranded with wire-end ferrules and plastic collars DIN 46228/4, rated connection, max.	2.5 mm ²
Twin wire-end ferrules, min.	0.5 mm ²	Twin wire-end ferrules, max.	1.5 mm ²
Wire connection cross section AWG, min.	AWG 26	Wire connection cross section AWG, max.	AWG 12

Dimensions

TS 35 offset	32 mm
--------------	-------

Creation date August 6, 2013 10:39:28 AM CEST

**W-Series
WDU 2.5/TC TYP K**

Weidmüller Interface GmbH & Co. KG
 Klingenbergstraße 16
 D-32758 Detmold
 Germany
 Fon: +49 5231 14-0
 Fax: +49 5231 14-292083
 www.weidmueller.com

Technical data

Rated data

Rated cross-section	2.5 mm ²	Standards	IEC 60584, IEC 60947-7-1
Pollution severity	3		

Material data

Material	Wemid	Colour	Dark Beige
UL 94 flammability rating	V-0		

System specifications

Product family	W-Series	Type of connection	Screw connection
Connection direction	on side	Number of levels	1
Number of connections	2	No. of clamping points per level	2
Levels cross-connected internally	No	Mounting rail	TS 35
End cover plate required	Yes		

Classifications

ETIM 2.0	EC000904	ETIM 3.0	EC000904
UNSPSC	30-21-18-11	eClass 4.1	27-14-11-31
eClass 5.1	27-14-11-31	eClass 6.2	27-14-11-90
eClass 7.1	27-14-11-90		

Approvals

Approvals



ROHS Conform