

NEW

Britclips[®] RSWB

Rapid Sliding Wall Bracket, the new addition to the Britclips[®] range

**QUICK
& EASY
TO FIT**



walraven

AVAILABLE DUE TO POPULAR DEMAND

RAPID SLIDING WALL BRACKET

Introducing the Rapid Sliding Wall Bracket – a cost effective solution for fitting electrical boxes and conduits within stud walling.

- Quick and easy to install
- Compatible with other Walraven products to offer a complete fixing solution
- High quality galvanised steel finish
- Quick 24 hour delivery

So now you can get all your electrical and mechanical fixings from Walraven.

Part No. 594 91 624



Expands from 16 to 24 inches



Use with:

- BIS starQuick® Clamp (085 4 0xx)
- BIS starQuick® Universal Rail Adaptor (085 4 332)
- BIS RapidRail® Hammerfix (652 3 6xx)
- BIS RapidRail® Slide Nuts (651 3 1xx)

Install in 3 easy steps



Supplied in connected pairs, simply snap the brackets apart.



The brackets can be extended to fit between studs that are 16 to 24 inches apart.

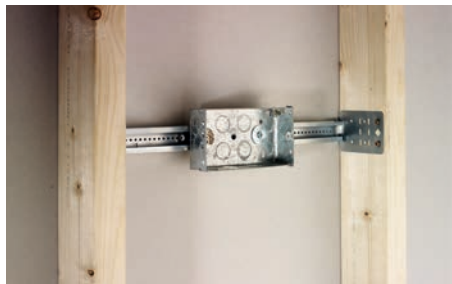


Bend the bracket ends to fix onto the studs.

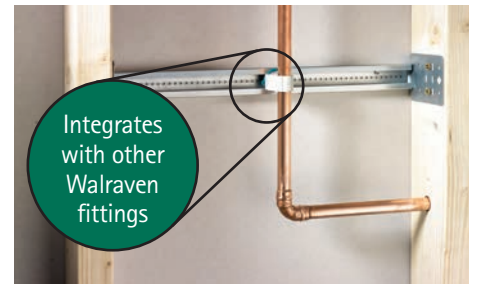
Suitable for multiple uses



Can be installed onto metal studs.



Or used on traditional timber studs.



Perfect for pipes, trunking and cabling, as well as boxes and conduits.

To find out more visit walraven.com/rswb
or call our sales team on 01295 75 34 00

Walraven Ltd. | Thorpe Way, Banbury Oxon, OX16 4UU, United Kingdom

walraven